



THE OPENFOX COMPANY®

www.openfox.com

OPENFOX® CONFIGURATOR

OPENFOX® CONFIGURATOR

Computer Projects of Illinois, Inc. (CPI), with its headquarters in Bolingbrook, Illinois, is a privately held corporation and an acknowledged leader in information-sharing software systems for the law enforcement and criminal justice community.

CPI is the only information sharing solutions provider that focuses solely on the unique needs of professionals in the law enforcement, and criminal justice fields. Simply, CPI products act as conduits that allow information to flow easily between various systems such as NCIC and NLETS.

Because of CPI's focus, nearly half of all law enforcement users within the U.S. (including federal, state and local agencies) rely on our comprehensive and proven OpenFox® suite of information sharing products.

In Brief

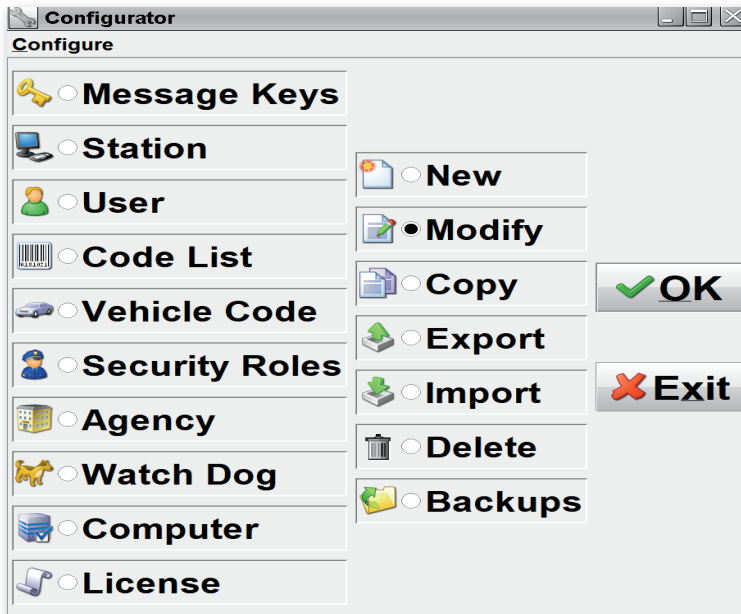
Ever-changing technology and demands for information at a faster pace poses the challenge of ensuring your system is flexible and able to adapt to provide constant line of communication among all agencies in the enterprise. Any breakdown in communication or inability to gain access to data may undermine the ability to effectively protect the public and ensure officer safety.

The OpenFox® Information Broker/Message Switching System provides tools which enable a properly authorized system administrator to quickly and easily provide support for new requirements.

Overview

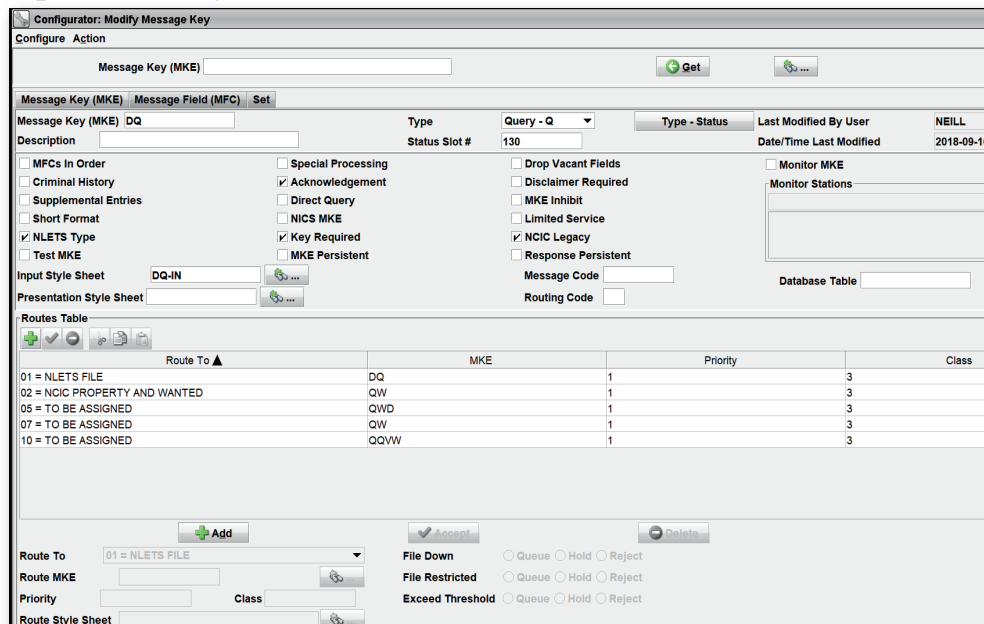
The OpenFox® Configurator tool allows authorized personnel to make all configuration changes online without having to restart the system. With the OpenFox® System there is no need to wait until a scheduled time to add new users or new access points (devices), or for that matter, new or modified message transactions. The Administrator uses the Configurator to point, click and implement new capabilities on the fly. In a matter of minutes an Administrator may add these new capabilities without requiring lengthy software development, programming assistance, vendor involvement or experiencing any downtime. Changes made with the Configurator are immediately available to the system without a re-boot or restart of any programs.

The Configurator is used to control, add, change and delete all of the configurable items in the OpenFox® System. The following screen shot shows the configurable elements that are available in the Configurator module.



MKE / MFC:

The Message Keys (MKE/MFC) configurator is used to define transactions. From this screen, new transactions can easily be added to the system including robust validation and routing logic. Existing transactions can also be modified to include new fields, (MFCs) or change existing validation or routing rules. All of this can be achieved without any downtime or code changes to the OpenFox® system.



Configurator: Modify Message Key

Configure Action

Message Key (MKE)

Message Key (MKE) Message Field (MFC) Set

Message Key (MKE) DQ Type Query - Q Type - Status Last Modified By User NEILL
Description Status Slot # 130 Date/Time Last Modified 2018-09-10

☐ MFCs In Order ☐ Special Processing ☐ Drop Vacant Fields ☐ Monitor MKE
☐ Criminal History ☒ Acknowledgement ☐ Disclaimer Required ☐ Monitor Stations
☐ Supplemental Entries ☐ Direct Query ☐ MKE Inhibit
☐ Short Format ☐ NICS MKE ☐ Limited Service
☒ NLETS Type ☒ Key Required ☒ NCIC Legacy
☐ Test MKE ☐ MKE Persistent ☐ Response Persistent

Input Style Sheet DQ-IN

Presentation Style Sheet

Message Code

Routing Code

Database Table

Routes Table

Route To	MKE	Priority	Class
01 = NLETS FILE	DQ	1	3
02 = NCIC PROPERTY AND WANTED	QW	1	3
05 = TO BE ASSIGNED	QWD	1	3
07 = TO BE ASSIGNED	QW	1	3
10 = TO BE ASSIGNED	QQVW	1	3

Route To 01 = NLETS FILE

Route MKE

Priority Class

Route Style Sheet

File Down ☐ Queue ☐ Hold ☐ Reject

File Restricted ☐ Queue ☐ Hold ☐ Reject

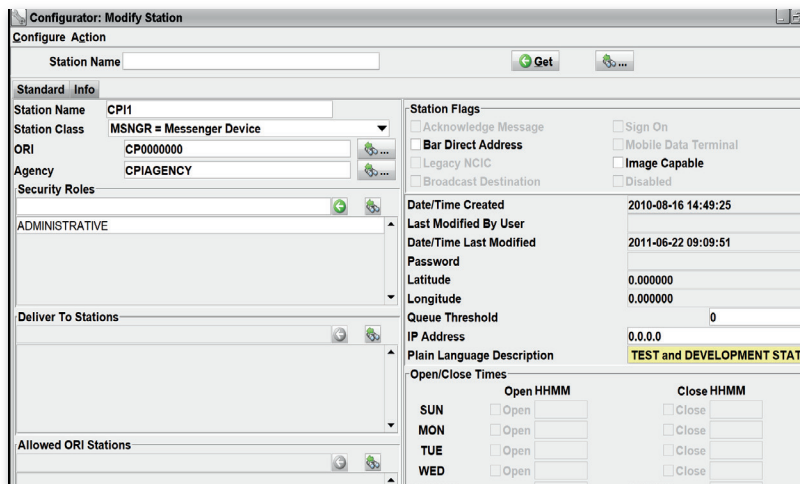
Exceed Threshold ☐ Queue ☐ Hold ☐ Reject

Current Clients:

Air Force Office of Special Investigations
Alabama Law Enforcement Agency
Arizona Department of Public Safety
Arkansas Crime Information Center
Hawaii Criminal Justice Data Center
Idaho State Police
Illinois State Police
Indiana State Police
Iowa Department of Public Safety
Kansas Bureau of Investigation
Kentucky State Police
Maine State Police
Massachusetts Criminal History System Board
Maryland Department of Public Safety
Michigan State Police
Mississippi Justice Information Center
Missouri State Highway Patrol
Montana Department of Justice
New Hampshire State Police
New Mexico Department of Public Safety
North Dakota Dept of Emergency Services
Ohio Department of Public Safety
Ohio Attorney General
Oklahoma Department of Public Safety
Oklahoma State Bureau of Investigation
Philadelphia Police Department
Rhode Island State Police
Rhode Island Attorney General
South Dakota Bureau of IT
Texas Department of Public Safety
US Army Criminal Investigative Division
US Department of Justice
US Immigration & Customs Enforcement
US National Central Bureau
US Naval Criminal Investigative Services
US Postal Inspection Service
Vermont Department of Public Safety
Virginia State Police
West Virginia State Police
Wisconsin Bureau of Criminal Investigation
Wyoming Division of Criminal Investigation

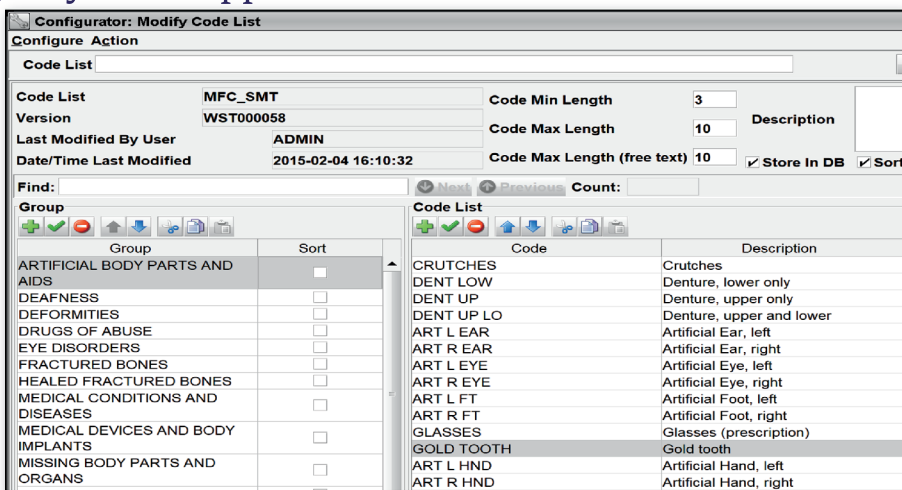
Stations

The Station screen is used to define entities such as work stations, ORI's, groups, interfaces, etc. If an agency desires to access the system from additional devices there is no need to wait for a new system generation procedure. The administrator gathers the necessary information, executes the Configurator and within minutes the system is supporting the new access. All of this is accomplished without impacting any other user or suffering any system downtime.



Code List

The Code screens are used to build code tables to assist the Message Switch when editing transactions received from user devices and assist Desktop clients for ease of data entry. Once again these changes are effective immediately and an administrator can add additional codes as soon as the target system supports them.




User

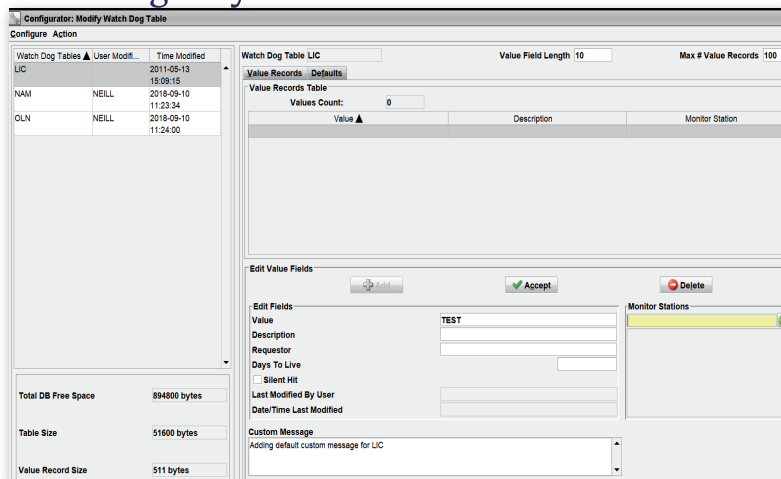
The User screen is used to define a User record in the User Repository and is used to maintain all information related to the identification, certification, password and all security information for the user. The User Repository is compliant with the NCIC CJIS Security Policy, but may also be specialized through the use of configuration parameters to stricter requirement if required by the State.

Agency

The Agency screen is used to store information about an agency in the system. Stations, users and licenses may be associated with agencies. The agency designator is included in all messages and is used by such components as the OpenFox® Archive Retrieval product to restrict a user's view of the message logs to their specific agency only.

Watch Dog

The Watch Dog screens are used to provide monitoring capability for the occurrence of a particular value in a field within transactions. For example, if the administrator or other authorized user such as a TAC creates an entry in the watch dog table for name (NAM), any transaction that contains a name field will be matched against entries in this table. If a match is found, the system notifies the access point which created the entry. The user sending the transaction is not aware that a notification is being sent to the concerned agency.



CPI OpenFox® Product Suite:

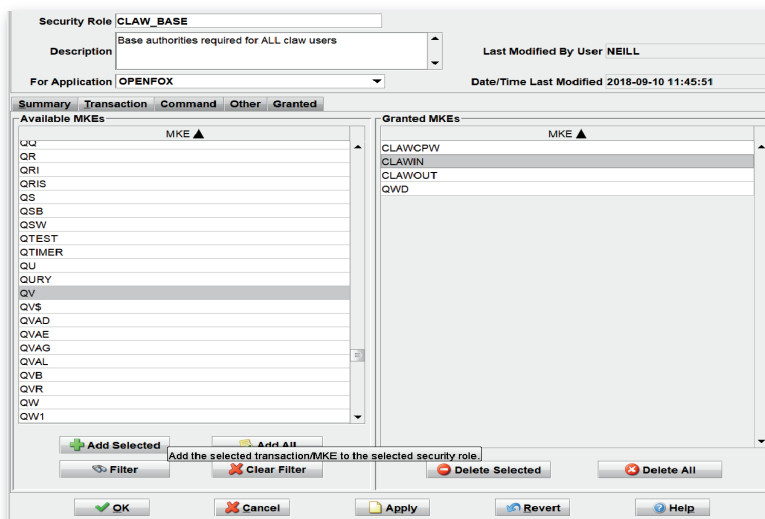
- Message Switch Information Broker
- Sex Offender Registry (SOR)
- Criminal History Records Application (CCH)
- CJIS Messenger Workstation
- High Availability
- Configurator
- Operator Aid
- Software as a Service (SaaS)
- Mobile Messenger
- CLAW - smartphone/tablet application
- iRap - Internet Record Access Portal
- Hotfile Application
- Archive Retrieval
- Online Validation Application
- Proxy Server
- nexText - CJIS Certification & Security training

Security Roles

A properly authorized administrator can use the Configurator application to create or modify existing security roles. He/she can then assign any number of transactions to the allowed list for a given security role. These security roles are then assigned to configured users, using the same configurator tool, thus providing transaction authorization capabilities down to an individual message transaction for all users in the system.

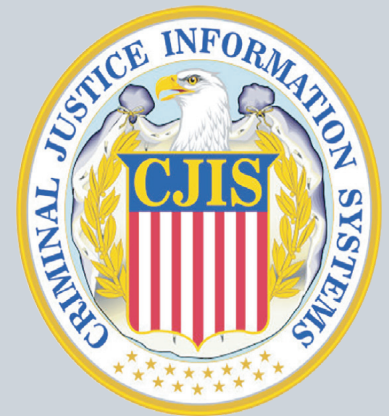
There are several additional capabilities in the OpenFox® Configurator to increase security role functionality, such as the ability to assign security roles to station configurations in addition to users if desired. This capability allows a system administrator to configure system access points that are limited in function regardless of which user signs on to that device. This can be useful in the instance where a terminal may be in an insecure location and criminal history transactions are never permitted to be run from it, even by a properly authorized CCH user as just one example.

The OpenFox® Configurator also allows security roles to be designed in a hierarchical fashion where transactions can be gathered into functional groups and these groups can then be assigned to security roles. Then when one low level functional group is modified, all higher level security roles will inherit the new permissions. This functionality can be used to ease the maintenance load on administrative personnel.



The screenshot shows the 'Security Role' configuration window for 'CLAW_BASE'. The 'Description' field contains 'Base authorities required for ALL claw users'. The 'For Application' dropdown is set to 'OPENFOX'. The 'Last Modified By User' is 'NEILL' and the 'Date/Time Last Modified' is '2018-09-10 11:45:51'. The window has tabs for 'Summary', 'Transaction', 'Command', 'Other', and 'Granted'. The 'Transaction' tab is active, showing a list of 'Available MKEs' on the left and 'Granted MKEs' on the right. The 'Available MKEs' list includes: UQ, QR, QRI, QRIS, QS, QSB, QSW, QTEST, QTIMER, QU, QURY, QV, QVS, QVAD, QVAE, QVAG, QVAL, QVB, QVR, QW, QW1. The 'Granted MKEs' list includes: CLAWCPW, CLAWIN, CLAWOUT, QWD. At the bottom, there are buttons for 'Add Selected', 'Add All', 'Filter', 'Clear Filter', 'Delete Selected', 'Delete All', 'OK', 'Cancel', 'Apply', 'Revert', and 'Help'.

CJIS & Nlets
Audited

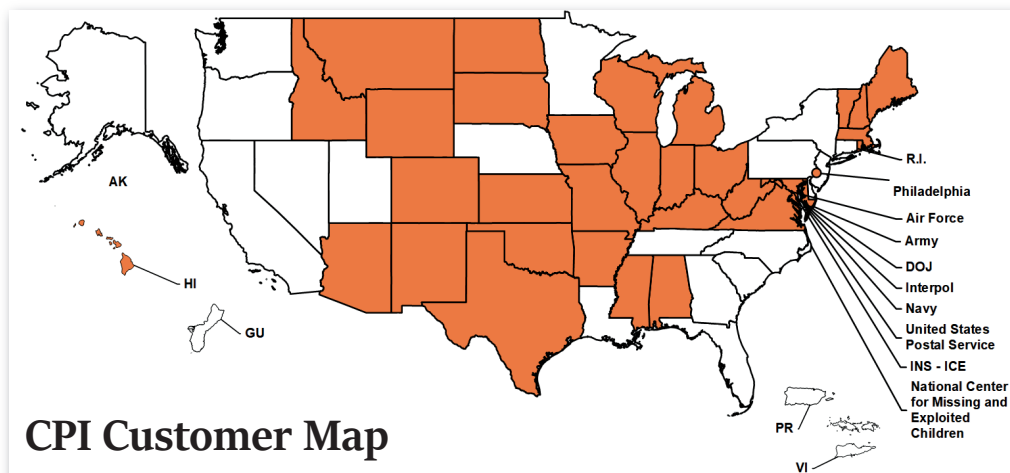


Computer

The Computer screen is used to define devices in the network for receiving specific notifications such as network errors, system errors, and security breaches or the spill station which generally receives those messages that cannot be routed and require manual intervention. These notifications can be sent to specific devices or groups of devices.

License

The License screen is used to provide the license product code which controls client software modules in the OpenFox® Desktop, such as Messenger, Form Configurator, Interceptor, Archive Retrieval, Criminal History Application, Sex Offender Registry and others. CPI provides the license records specifying the purchasing agency when the licenses are purchased. The system administrator or TAC may modify the license records for which they are the purchasing agency.



Computer Projects of Illinois, Inc.

400 Quadrangle Drive, Suite F

Bolingbrook, IL 60440

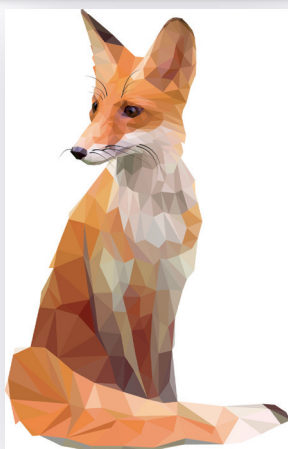
Tel: (630) 754-8820

Fax: (630) 754-8835

Help Desk: 866-471-6305

www.openfox.com

The OpenFox® Company



Interested in a hosted solution?

Contact us now to find out more about
OpenFox® Software as a Service:

(888) 353-4095 • Sales@openfox.com





PROVEN PROGRESS. PROVEN PROTECTION.

CPI

400 Quadrangle Drive Suite F
Bolingbrook, IL 60440
(888) 353-4095